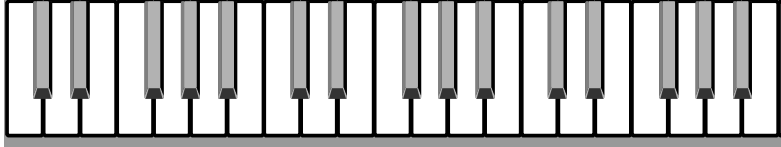


Bass Clef Chords and Inversions for the key of _____

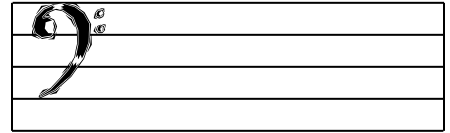
The full octave notes in this key are: _____, _____, _____, _____, _____, _____, _____, _____

Color in or mark the 3rd C from the left as Middle C

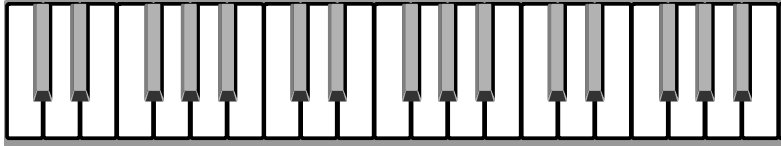
The I, One, or Tonic/Root Chord for this key is:



And:



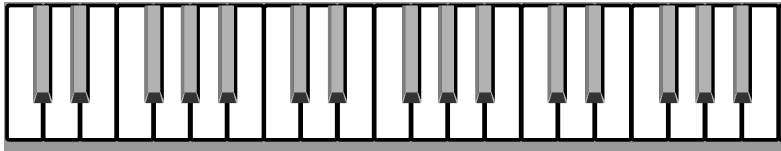
The IV, Four, or Subdominant Chord for this key is:



And:



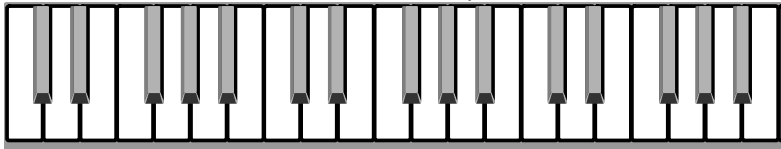
The V7, Five-Seven, or Dominant Chord for this key is:



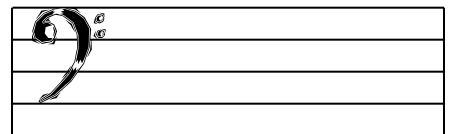
And:



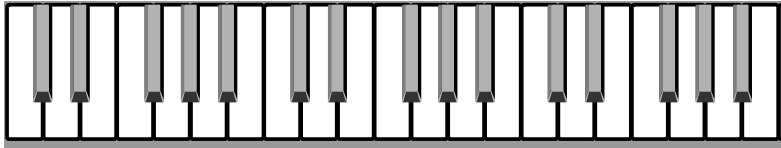
The 1st inversion, or I Chord, for this key is:



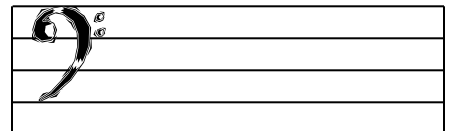
And:



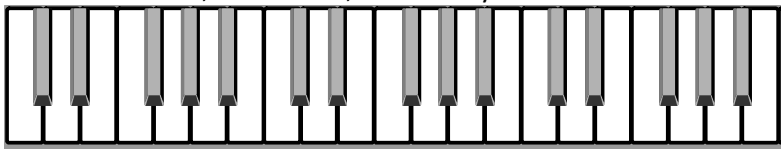
The 2nd inversion, or I_b Chord, for this key is:



And:



The 3rd inversion, or I_c Chord, for this key is:



And:

