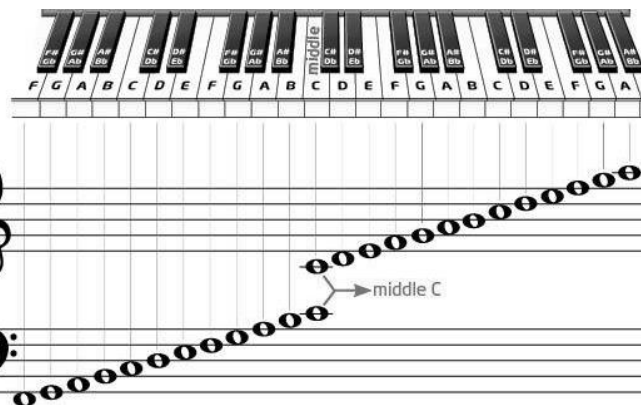


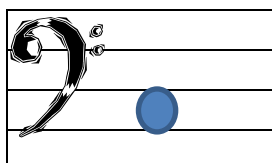
# Heart and Soul Chords



The harmony for Heart and Soul is simply a tonic note followed by its I (tonic/root) chord in the repeating pattern C, Am, F, then G; with a variation of playing C, Am, Dm, G.

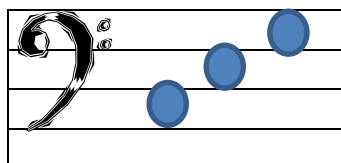
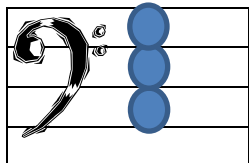
Write the lower tonic note in the bass clef with "8va" under it to play it an octave lower, followed by its stacked, then broken I chords.

## C Major Tonic Note



8va

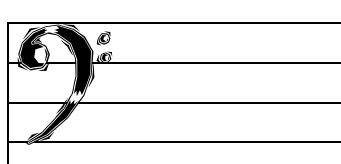
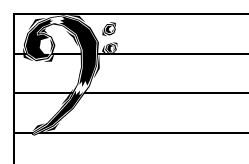
## C Major I Chord Stacked, then Broken



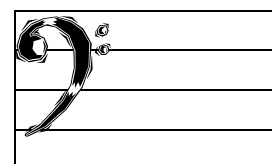
## A Minor Tonic Note



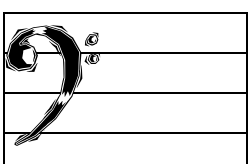
## A Minor I Chord Stacked, then Broken



## F Major Tonic Note



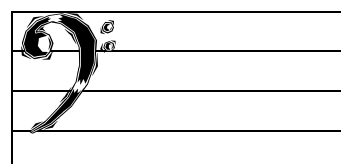
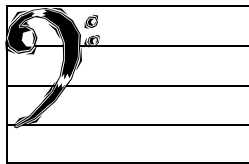
## F Major I Chord Stacked, then Broken



## G Major Tonic Note



## G Major I Chord Stacked, then Broken







## Playing the harmony to Heart and Soul

Playing the harmony is simple. The left hand plays the lower tonic note, and then the right hand follows with its chord.

Try each of these rhythms in all four keys (C, Am, F, then G) before switching to a different rhythm. Later switch out one rhythm set with C, Am, Dm, G.

### Stacked Chords

Left Hand	Right Hand
	
	

### Broken Chords

Left Hand	Right Hand
